

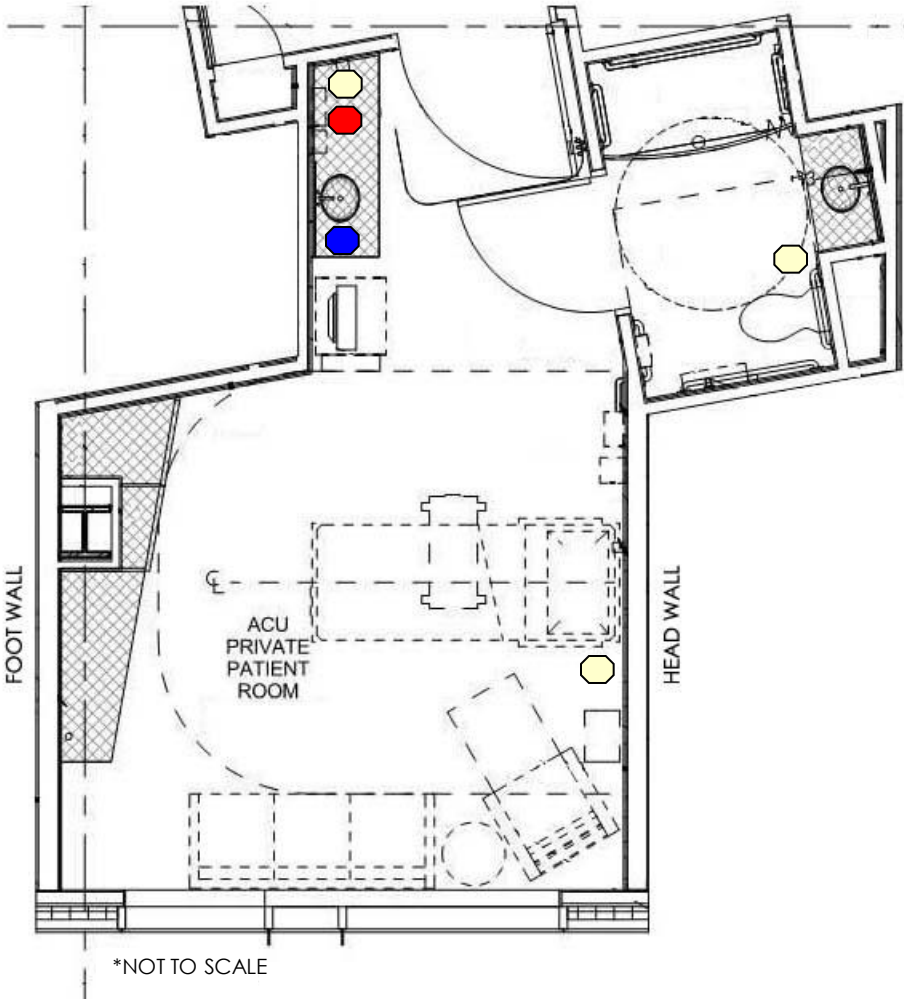
# CANCER & CRITICAL CARE TOWER

## Operational Flow Study of Patient Room Cleaning

Patient Room Enlarged Floor Plan

# ACUTE CARE

*Kiegel*



RECYCLE CONTAINER



WASTE STEP-ON @ BEDSIDE



WASTE STEP-ON @ BATHROOM



WASTE STEP-ON @ UNDER SINK



HAZARDOUS CONTAINER

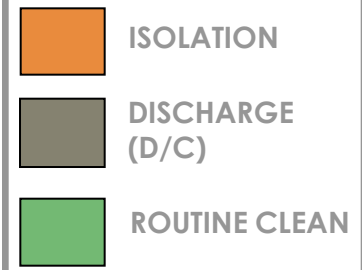


# CANCER & CRITICAL CARE TOWER

## Operational Flow Study of Patient Room Cleaning

Operational Time Process- Dayshift (7am-3:30pm)

# ACUTE CARE



*Kiegel*




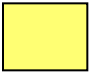


\*NOT TO SCALE

# CANCER & CRITICAL CARE TOWER

## Operational Flow Study of Patient Room Cleaning

Operational Time Process- Dayshift (7am-3:30pm)

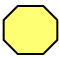



# ACUTE CARE

	PATIENT ROOM
	EVS STORAGE
	SOILED UTILITY
	AGV

Typical Routine Patient Room Scenario



\*NOT TO SCALE

-  Step #1: (# min) Enter EVS and take out cart
-  Step #2: (# min) Enter Routine Patient Room with cart, clean and collect trash
-  Step #3: (# min) Take trash to Soiled Room, sort trash and empty into proper areas
-  Step #4: (# min) Take chemo and hazardous to AGV and incinerate trash